

HID F-CAN BALLASTS

Support 35 to 400 watt lamps

Metal halide and pulse start metal halide units provide bright-white light and excellent color

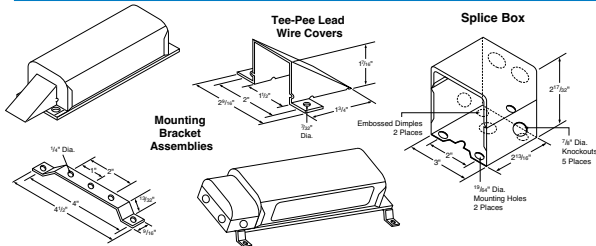
High-pressure sodium ballasts are efficient and cost-effective

Color-coded leads reduce miswiring

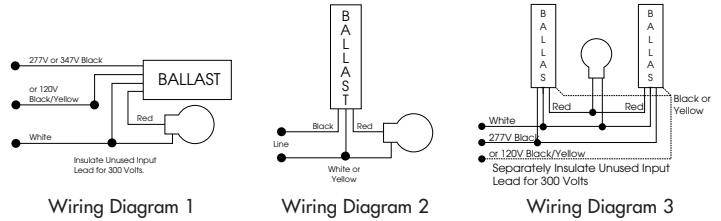
UL listed and CSA certified



ACCESSORIES



WIRING



Input Volts	Catalog Number	Circuit Type	Input Watts	Max Input Current	NOM Open Circuit Voltage	Fuse Rating	Wiring Diagram	Overall Dimensions			Case Length	Mounting Dimensions			Total Weight (lbs)	Max Distance to Lamp (ft)	Sound Rating
								Length	Width	Height		Length	Width	Hole			
(1) 175 WATT METAL HALIDE																	
120 or 277	1110-245-SC-TC	CWA	205	1.75 0.75	300	5 3	1	14.30	3.15	2.60	13.15	13.75	2.00	0.20	14.0	*	B
120 or 347	1110-564-C-TC	CWA	205	1.75 0.62	300	5 2	1	11.75	3.15	2.60	10.55	11.10	2.00	0.20	14.0	*	B
(1) 250 WATT M58 METAL HALIDE																	
120 or 277	1110-246C-TC ¹	CWA	295	2.50 1.10	280	8 4	1	16.65	3.15	2.60	15.55	16.10	2.00	0.20	17.5	*	C
120 or 277	1111-246C-TC ²	CWA	300	2.50 1.10	300	8 4	3	11.75	3.15	2.60	10.55	11.10	2.00	0.20	11.0	*	B
120 or 347	1110-566C-TC	CWA	295	2.50 0.95	285	8 3	1	16.65	3.15	2.60	15.55	16.10	2.00	0.20	17.5	*	C
(1) 400 WATT M59 METAL HALIDE																	
120 or 277	1110-247SC-TC	CWA	460	3.90 1.70	300	10 5	1	19.25	3.15	2.60	18.05	18.60	2.00	0.20	23.0	*	C
120 or 277	1111-247SC-TC ¹	CWA	460	3.90 1.70	300	10 5	3	14.30	3.15	2.60	13.15	13.75	2.00	0.20	14.0	*	B
120 or 347	1110-568C-TC	CWA	460	3.90 1.30	300	10 5	1	19.25	3.15	2.60	18.05 1.40	18.60	2.00 4	0.20	23.0	*	C
(1) 35 WATT S76 HIGH PRESSURE SODIUM LAMP (WITH BUILT-IN IGNITOR)																	
120 or 277	12210-261C-TC	HX-HPF	55	0.80 0.35	120	5 2	1	11.75	3.15	2.60	10.55	11.10	2.00	0.20	9.0	10	B
(1) 50 WATT S68 HIGH PRESSURE SODIUM LAMP (WITH BUILT-IN IGNITOR)																	
120 or 277	12210-236C-TC	HX-HPF	75	1.40 0.60	120	5 2	1	11.75	3.15	2.60	10.55	11.10	2.00	0.20	9.0	10	B
(1) 70 WATT S62 HIGH PRESSURE SODIUM LAMP (WITH BUILT-IN IGNITOR)																	
120 or 277	12210-237C-TC	HX-HPF	97	1.60 0.70	140	5 2	1	11.75	3.15	2.60	10.55	11.10	2.00	0.20	9.2	10	B
120 or 277	12210-552C-TC	HX-HPF	109	1.69 0.63	145	5 2	1	11.75	3.15	2.60	10.55	11.10	2.00	0.20	9.0	10	B
(1) 100 WATT S54 HIGH PRESSURE SODIUM LAMP (WITH BUILT-IN IGNITOR)																	
120 or 277	12210-239C-TC	HX-HPF	125	2.10 1.00	130	6 3	1	11.75	3.15	2.60	10.55	11.10	2.00	0.20	10.4	10	B
120 or 277	12210-606C-TC	HX-HPF	165	2.10 0.90	165	6 3	1	11.75	3.15	2.60	10.55	11.10	2.00	0.20	10.4	10	B
(1) 150 WATT S55 HIGH PRESSURE SODIUM LAMP (WITH BUILT-IN IGNITOR)																	
120 or 277	12210-241C-TC	HX-HPF	185	2.80 1.20	120	8 4	1	14.30	3.15	2.60	13.15	13.75	2.00	0.20	14.1	10	B
120 or 347	12210-602C-TC	HX-HPF	185	2.80 1.03	120	8 3	1	14.30	3.15	2.60	13.15	13.75	2.00	0.20	14.1	10	B

1-This ballast can be used with a MH200 Ignitor to operate (1) 250 Watt M103 lamp. Contact Universal Lighting for instructions.

2-Two of these ballasts are required to operate the lamp. Electrical Data is shown for two ballasts with the exception of Sound Rating, which is listed for each ballast.

* Refer to Page 24